

ALL TERRAIN LIFT & CARRY MOBILE CRANE

Quality Systems



Quality
Endorsed
Company
ISO 9001-1391



FRANNA

AT-20

FRANNA AT-20 CRANE SPECIFICATIONS



RATED CAPACITY

20 tonne at 1.4m radius
19 tonne at 1.7m radius
1.55 tonne at 15.80m radius

Hook Height 16.75 metres
Lift Hook block 16.8 tonne
Single Line 4.2 tonne

AXLE LOADINGS

Front Axle 8000kg
Rear Axle 11500kg
TOTAL 19500kg

TURNING CIRCLE

Outside Wheels 7.4 metres

DIMENSIONS

Overall Length 9.67 metres
Overall Width 2.50 metres
Overall Height 3.07 metres

HYDRAULIC WINCH

Line pull with full drum 4.2 tonne
2 speed electronic controlled, 4 part fall block, full hook compensation.

CABIN

HOPS type insulated lock up cabin.

ENGINE

Hino H07C-T 6 Cylinder Turbo Charged
182 kW (217 HP) at 2500 rpm
647 Nm (477 ft. lb) at 1700 rpm.

TRANSMISSION

Allison MT643 4 Speed fully automatic with lockup available in 3rd/4th whilst driving and 1st-4th in conjunction with the exhaust brake.

TRANSFER CASE

Two (2) speed AIR SHIFT with AIR SHIFT disconnect to REAR wheels.

HYDRAULIC TANK

Capacity 255 litres.

FUEL TANK

Capacity 290 litres.

DRIVE AXLES

Front and rear heavy duty drive axles. Driver engaged air diff lock on front axle.

DRIVE SHAFTS

Spider Spline 1510.

BRAKES

Full air S cam Twin Circuit Brakes front and rear axles. Spring applied on rear axle, Crane operation hold brake on front wheel. Engine exhaust brake.

TYRES

1200 x 20 x 20 PR Duals.

STEERING

Full Power ORBITROL with twin Hydraulic double acting rams. Priority flow from main pump supply plus electro hydraulic emergency supply.

HYDRAULIC PUMP

Load sensing axial piston 126 litre/min.

SUSPENSION

Two (2) Semi elliptic springs on each axle plus TORSION BAR on front axle for stability.

PERFORMANCE

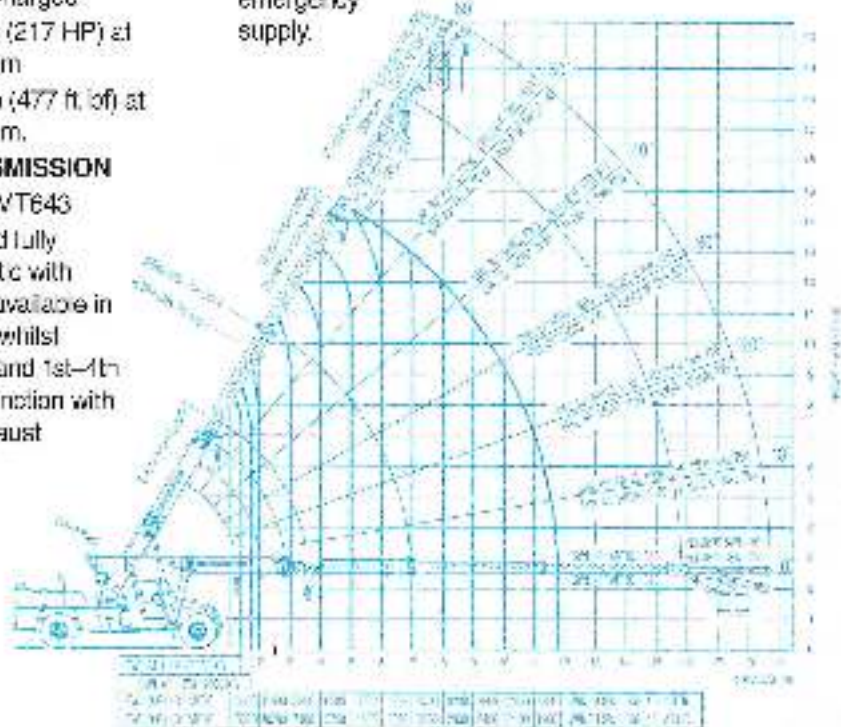
Maximum - 85kph
Gradability - 50%

STANDARD EXTRAS

- Air Conditioning
- Machinery Hook
- Central greasing
- Onboard LMI

OPTIONAL EQUIPMENT

- Spare wheel carrier
 - Fly Jib (2.9m)
 - Man Basket
 - Spreader Bar
 - Others on application
- Specifications subject to change without notice.



TEREX LIFTING AUSTRALIA PTY. LTD.

ABN 86 010 671 048

**585 Curtin Avenue East Eagle Farm Brisbane
Qld 4009 Australia**

Telephone: +61 7 3868 9600 Facsimile: +61 7 3268 2489

Email: info@franna.com.au